



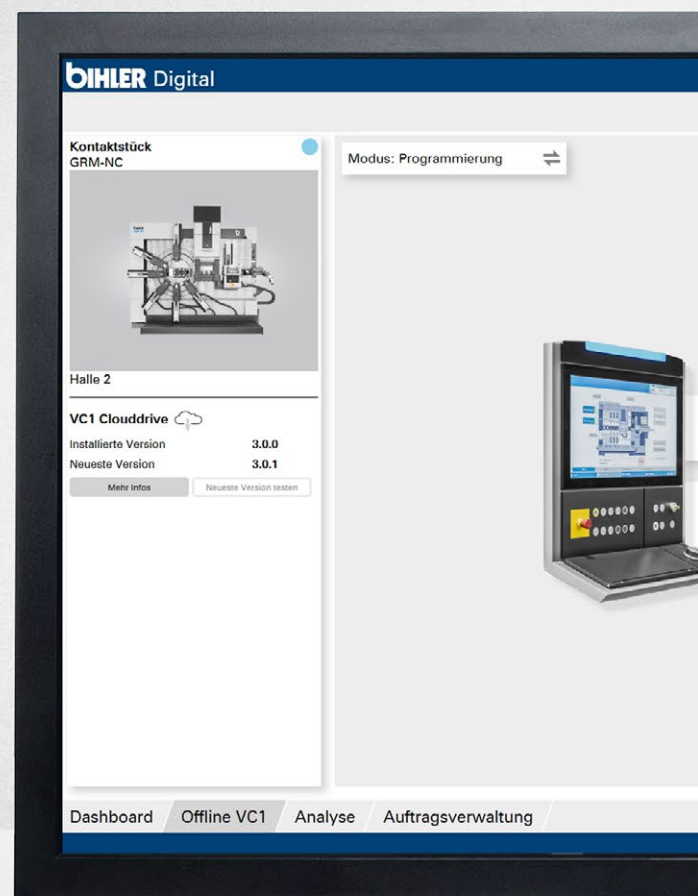
# BIHLER DIGITAL APP

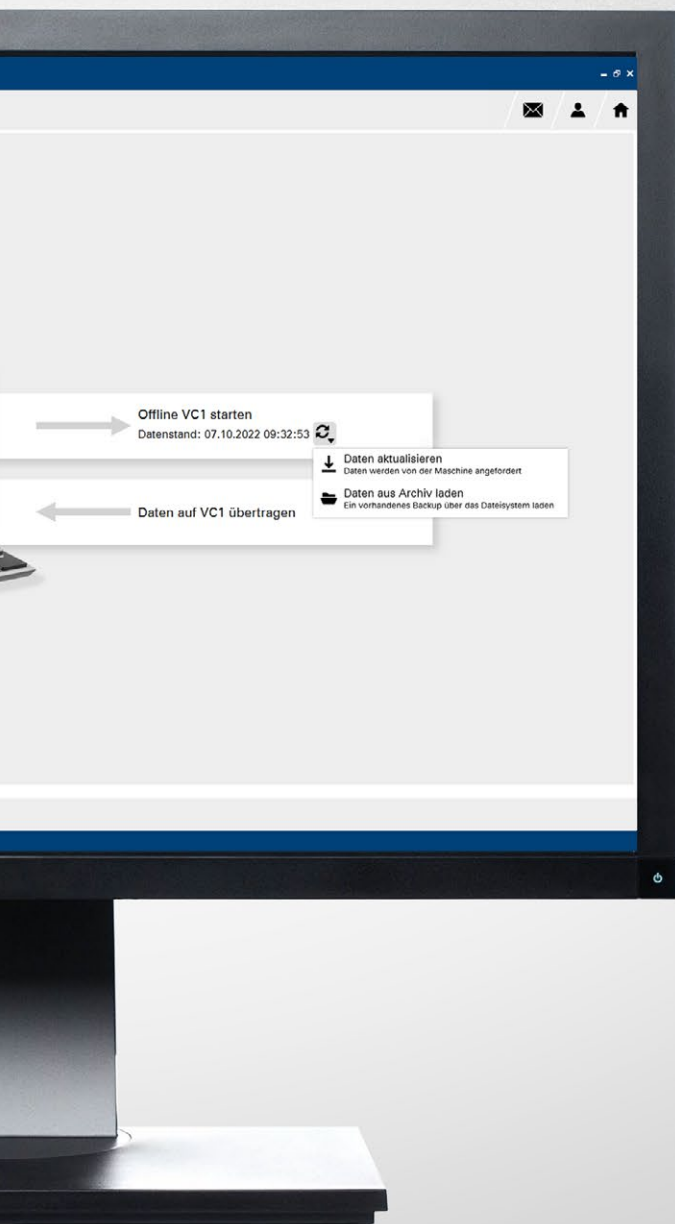
Digital modules for  
production optimization

# DIGITAL VALUE CREATION

## Set the course for your success

With the „Bihler Digital App“, you increase efficiency in your production. Thanks to the modularity of the digital application, you fully exploit optimization potential on your machine. The focus is on training your employees as well as analyses and adjustments to the plant. The application is immediately ready for operation in a plug & play process without any programming effort.

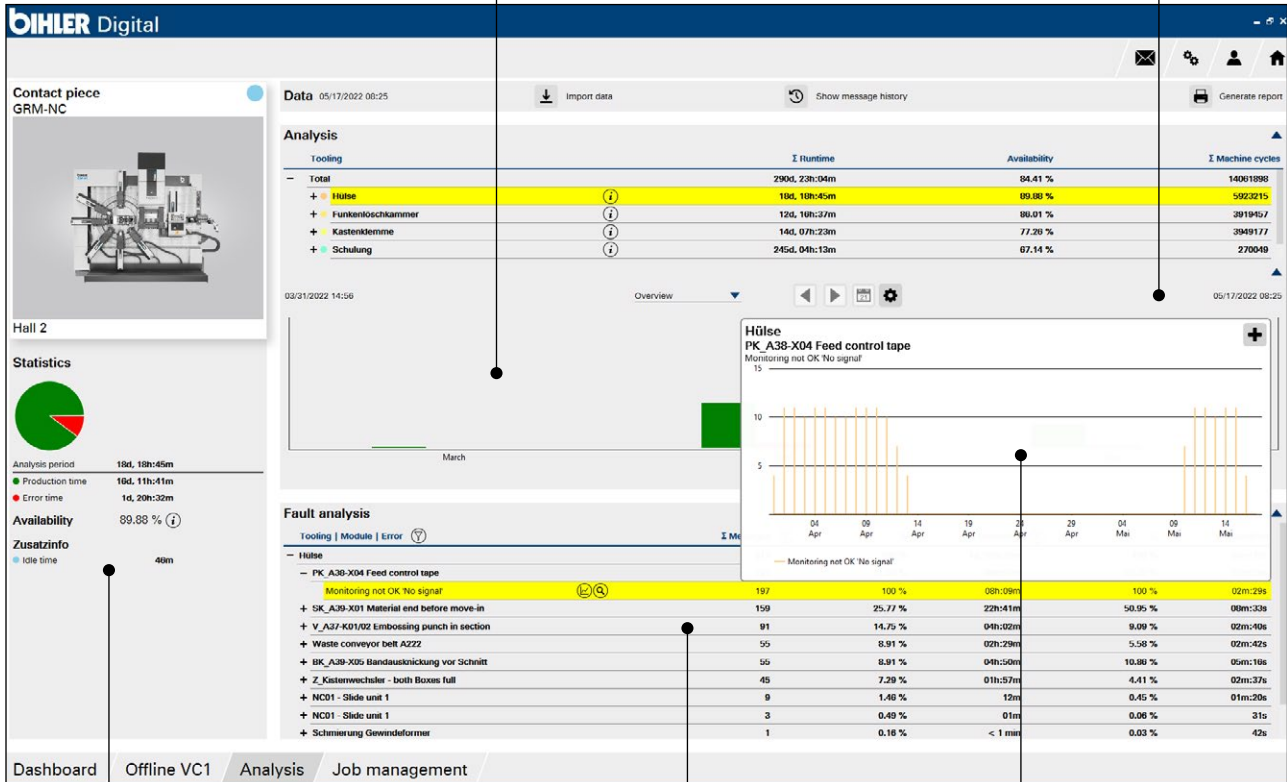




# ANALYSIS

Fast visual  
production status detection

Define time periods  
yourself



Calculate statistics

Detailed error analysis

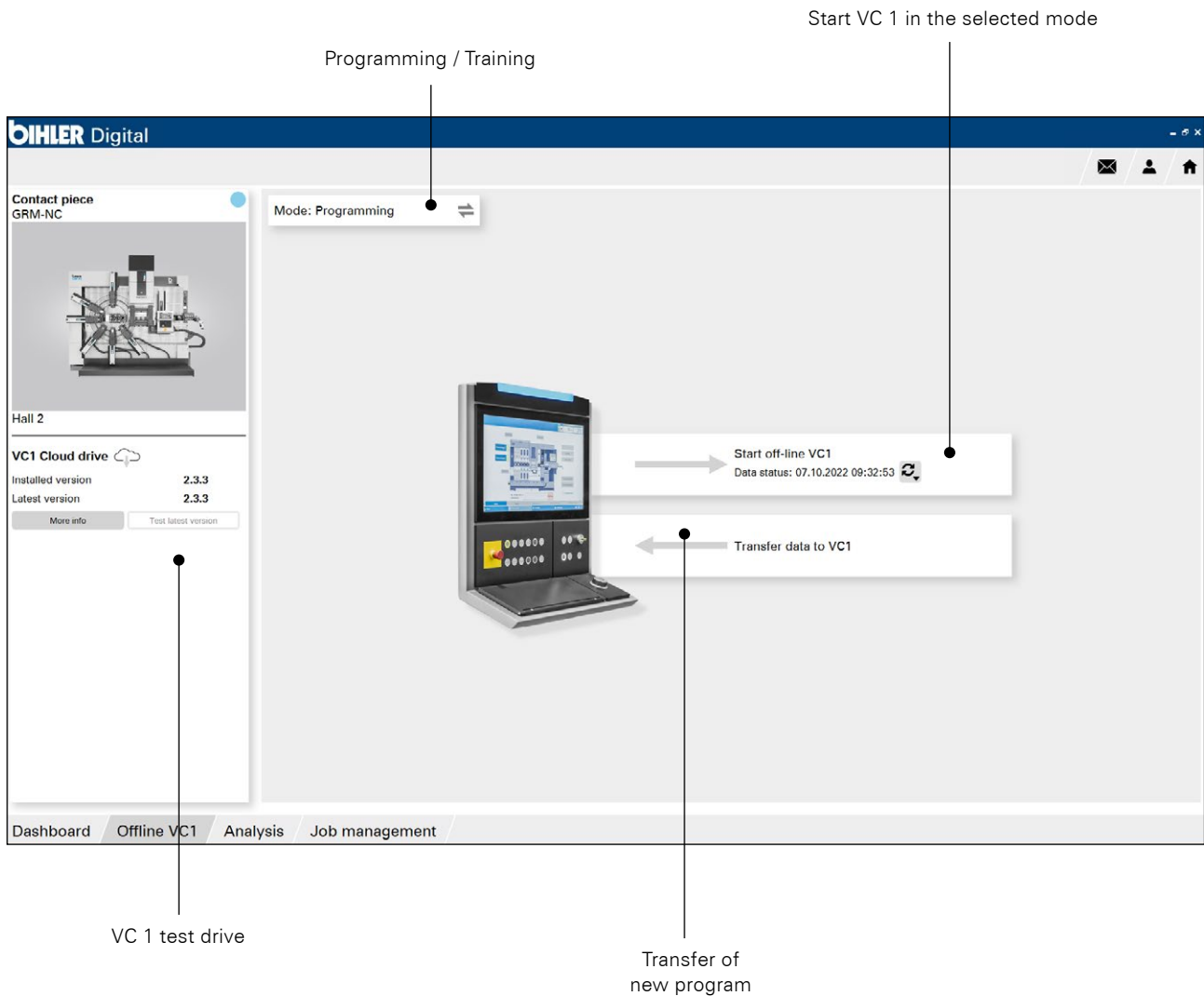
Display trend

## ANALYSIS MODULE

With the analysis module, you filter specific data from the machines, prepare it individually and create trend statistics with exact chronological error sequence. The most frequent errors with date and time as well as the duration of the corresponding downtimes in production become visible. The period under consideration can be narrowed down as desired. This allows you to see the relevance of the errors at a glance and to initiate targeted optimization measures.

The special plus during the initial evaluation of the analysis data: Bihler experts from the consulting department evaluate the initial results of the defect analysis and provide concrete recommendations for action to optimize the manufacturing processes. This additional service is included in the analysis module subscription. If required, the Bihler Consulting team then supports you in implementing the optimizations with an optimization package that is available separately.

# CONTROL



## OFFLINE VC 1 MODULE

With the Offline VC 1 module, you can program new tools, parameterize existing tools or perform other preparations on the machine offline on an office computer without interrupting the system. This increases machine availability and boosts cost efficiency. The same applies to training sessions on the VC 1, which are simply held offline on the desktop while production is running. In addition, you can use this module to test the latest VC 1 version offline in advance.

### Modes Programming / Training:

- Offline VC 1 programming: Extension and modification comfortably from your desktop computer in the office
- Offline VC 1 training: Training of employees at the office workstation without interruption of production

# JOB MANAGEMENT

**Current Job**

- Accepted: 12877
- Reject: 2193
- Produced: 16070
- Remaining: 7623

| Name       | Nominal number of pieces | Description        | Planned start    | Tooling ID  | Product |
|------------|--------------------------|--------------------|------------------|-------------|---------|
| Demo-Job 1 | 242                      | Demo description 1 | 03.01.2024 14:02 | Demo tool 1 | Demo    |
| Demo-Job 2 | 666                      | Demo description 2 | 25.09.2023 14:02 | Demo tool 2 | Demo    |
| Demo-Job 3 | 4711                     | Demo description 3 | 06.11.2023 14:02 | Demo tool 3 | Demo    |

**General**

Name: Demo-Job 1  
Description: Demo description 1  
Priority: Demo  
Status: New  
Nominal number of pieces: 242

**Period of time**

Planned start: 25.09.2023 00:00  
Latest completion: 26.09.2023 00:00  
Planned processing time: 0d, 14h, 18m

**Tooling**

Tooling ID: Demo tool 1  
Tooling name: \_\_\_\_\_

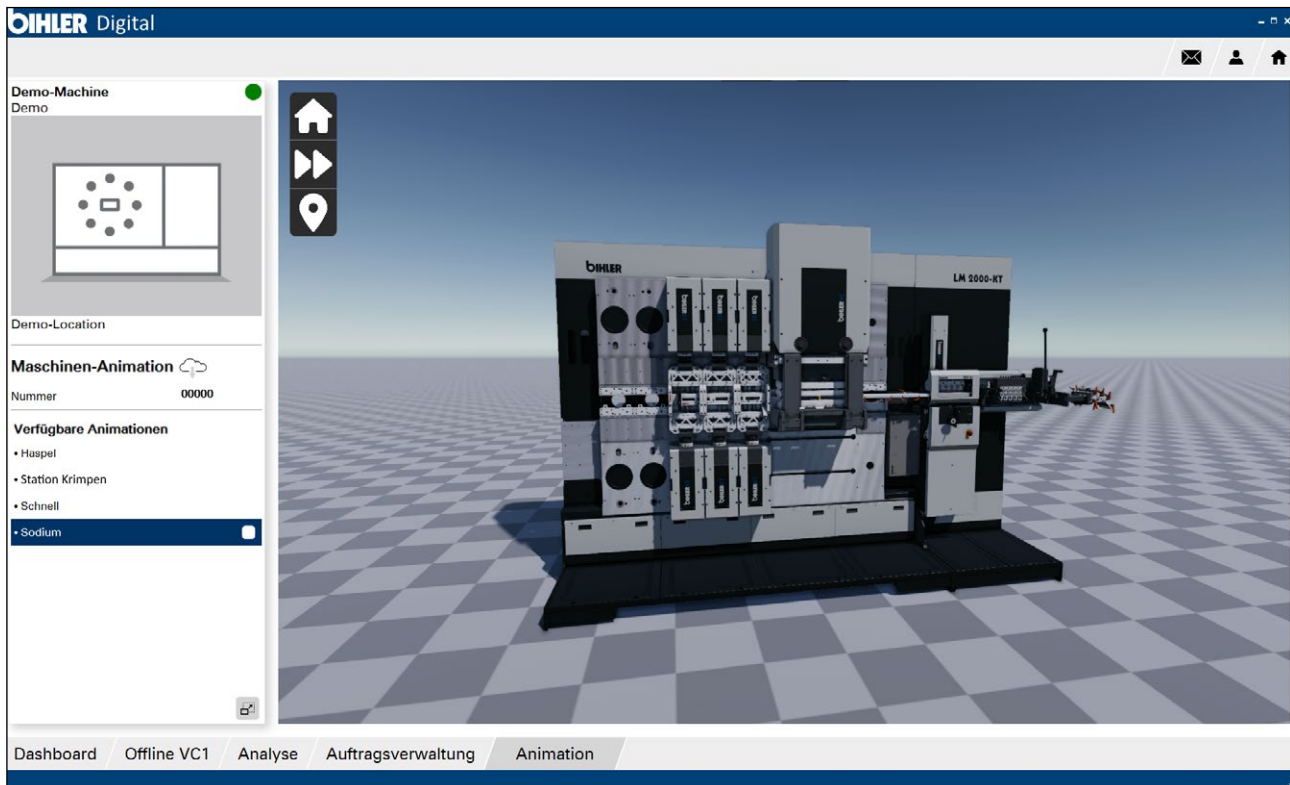
**Product**

Product name: Demo product 1  
Product description: \_\_\_\_\_  
Material: \_\_\_\_\_

## JOB MANAGEMENT MODULE

With the „Job Management“ module, job management no longer has to be done at the VC 1 control. You can now manage the job supply conveniently in your office at your desk. Jobs can be created, edited, planned and prioritized there and then fed digitally (paperless) into production. This minimizes time and printing costs. The new module is also functionally optimized and designed to be particularly user-friendly.

# MACHINE ANIMATION

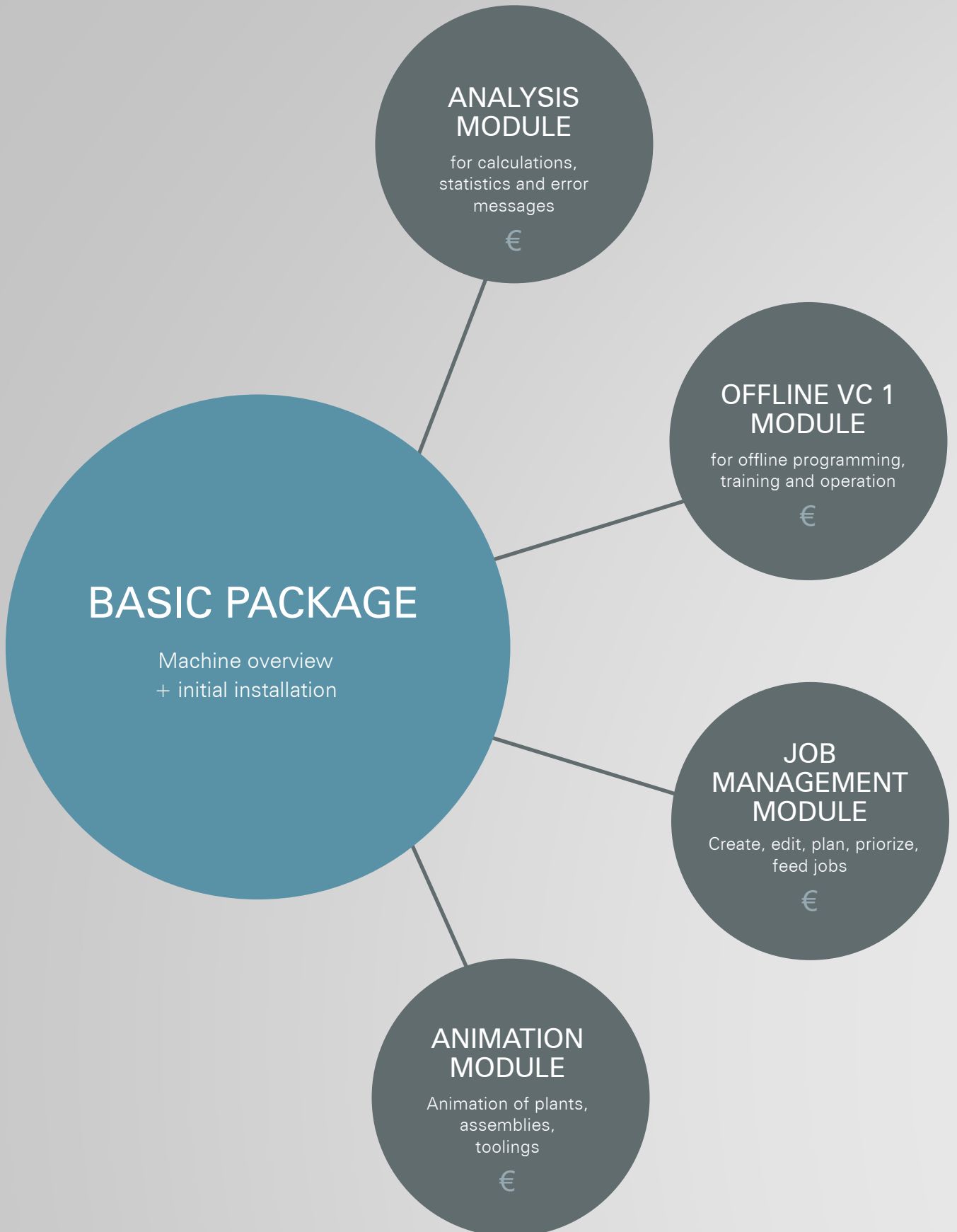


## ANIMATION MODULE

The "Animation" module allows the visualization and animation of complete production lines as well as individual assemblies or tools. The animations are perfect for training and familiarization purposes. However, you can also use them as a knowledge database.

The basis for each animation is the corresponding CAD data of your plant. These are animated according to the game engineering principle. Via a play button you then start the complete manufacturing process from strip feeding to the final product. In addition to particularly detailed views, you can also set points of interest in the "Animation" module. These are information fields that you store on an assembly or tool using a marker and contain useful information such as setting sheets or instructions.

# ABO-MODELL





## PRICE MODEL

A subscription model tailored to your individual needs - you pay only for modules you need.

## SYSTEM REQUIREMENTS

- VC 1 control software version 2 or higher
- OPC UA server
- End device: Desktop, laptop or tablet with Windowsversion 10 or higher



## CONTACT



Bastian Hartmann  
Sales Customer Support

+49(0)8368/18-296

[bastian.hartmann@bihler.de](mailto:bastian.hartmann@bihler.de)

# EXPLOIT OPTIMIZATION POTENTIAL







Otto Bihler Maschinenfabrik GmbH & Co. KG

Lechbrucker Str. 15

87642 Halblech

GERMANY

+49(0)8368/18-0

[info@bihler.de](mailto:info@bihler.de)

[www.bihler.de](http://www.bihler.de)